

SAGE ACCPAC



Sage Accpac Integrated Suite

Puts You In The Driver's Seat



Get a 360° view of your business with Sage Accpac



Sage Accpac supports different languages and multicurrency transactions. Our network of partners in more than 150 countries allows you to confidently conduct business with suppliers and customers anywhere in the world.

World-Class Architecture

Sage Accpac ERP is an advanced application built on a multi-tiered, object-oriented architecture. Designed for the SMB market, Sage Accpac can be deployed either as a Web-based application or as a desktop application.

Sage Accpac lets you choose the solutions and configurations that work best for you: The applications, the database, the deployment options and languages, the network environment or operating system, and the add-on software developed by Sage Software or one of our network of independent industry experts. We're here to help you operate more efficiently and allow you to focus on growing your business the right way.

Ultimate Scalability

From single-user remote locations to large corporate environments with multiple locations and demanding business management needs, no other product scales like Sage Accpac ERP. With Sage Accpac, you can upgrade smoothly from one version to the next as your business requirements expand, safe in the knowledge that your data will easily move with you.

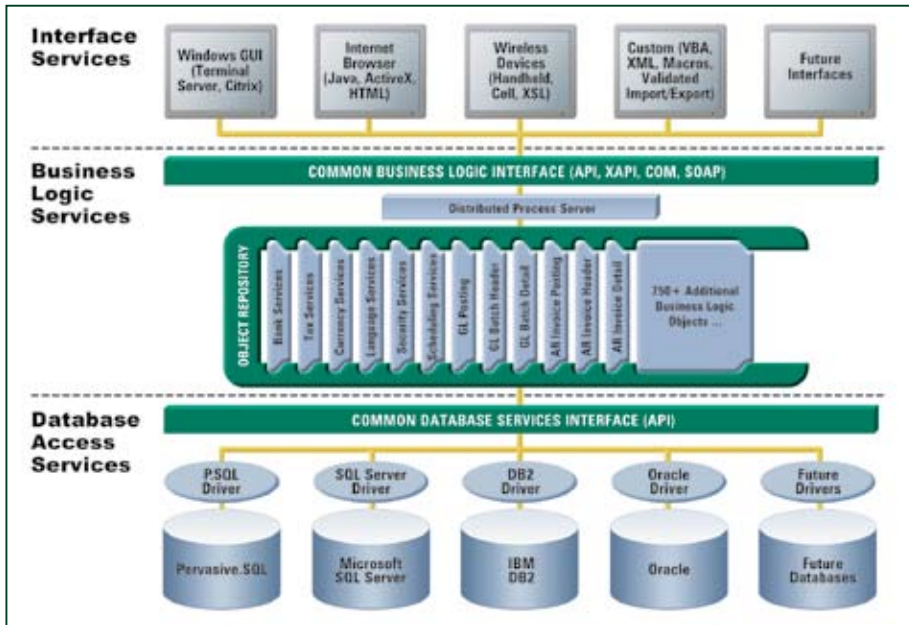
All Sage Accpac products have a uniform user interface, making it easy to upgrade without costly staff retraining or data conversion. Sage Accpac also enables data processing across multiple servers, so as your number of users increases, multiple servers can share the processing workload.

What's New in Sage Accpac 5.5:

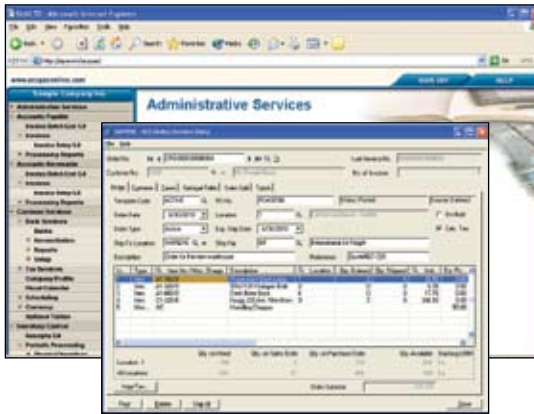
Feature	Description	Benefit
Dashboards	Up-to-date snapshots of your company's financial and operational status	Allows executives to make better-informed, more timely decisions
General Ledger Account Rollup*	Lets users create relationships between accounts	Saves time and resources, minimizes errors, and allows for easier accounts reconciliation and consolidation
Multicurrency Revaluation	Choose currency revaluation methods based on different international standards	Ensures compliance with currency translation standards enforced in different countries
Multiple Customer Billing (PJC)	Invoice multiple parties to one contact for different facets of work	Keep control of your project costs, billing, and accounts receivables, even if you have to bill multiple customers for the same job

* Available only in 500 edition

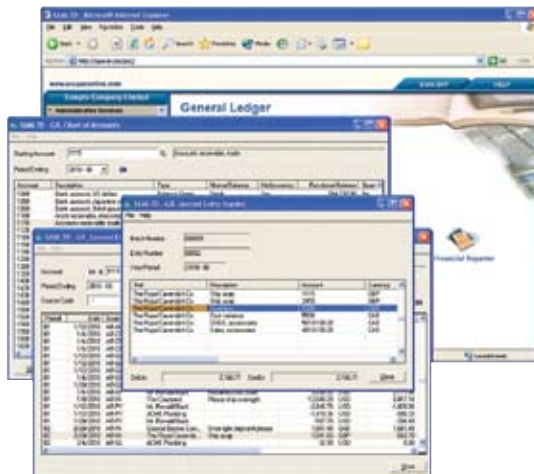
SAGE ACCPAC ARCHITECTURE



Sage Accpac is built upon industry-leading architecture that stands the test of time—quickly adapting to new technologies and easily integrating external applications for effective information exchange.



Web Desktop and Order Entry screens in Sage Accpac allow secure access to business functions—anytime, anywhere.



Cross-module capabilities let you drill down to the original transaction.

Completely Web-Based

Sage Accpac ERP has changed the rules of mid-market business management solutions by offering complete access to your accounting system through a standard Web browser. You can now access Sage Accpac anywhere, anytime, through our easy-to-use Web-based interface.

Easy-to-Use and Customizable

Sage Accpac ERP is easy to set up and use, with intuitive wizards and a familiar interface that make configuration and navigation a breeze. Embedded Microsoft Visual Basic for Applications (VBA) lets you easily expand, customize, and integrate your Sage Accpac application.

“ Sage Accpac takes a sovereign position in mid-market solutions for the breadth of its integration. Architected for the Web, the object-oriented technological infrastructure has served the company well in supporting a total back-office to front-office integration of the complete product line.”

Dr. Katherine Jones
Aberdeen Group



Accounts Payable, Receivable and Sales Analysis Dashboards

With AR, AP & Sales Analysis all presented on a dashboard before you, it's your command center of business excellence. You are empowered to make executive decisions like a champion at the race.

Total Investment Protection

Our software assurance plan, Sage Cover, allows you to automatically receive version upgrades and service packs for your Sage software solution. You are protected from price increases for your entire subscription term.

Designed for Global Business

Sage Accpac is deployed in more than 150 countries worldwide and supports multiple languages, so it can satisfy even the most demanding international requirements. A truly global application, Sage Accpac handles transactions using multiple currencies, calculates currency-revaluation, and complies with local accounting.

Industry-Specific Solutions for Your Business

Our strong network of more than 400 development partners provides wide range of high quality integrated vertical tools. Whatever your industry, our skilled partner network makes it possible to meet any business challenge, no matter how unique.

Freedom of Choice

With streamlined integration across applications, advanced Web and wireless access, full multilingual and multicurrency capabilities, a scalable open architecture, and a choice of databases and operating systems, you can select the edition that best meets your business needs now, and that is scalable to meet your future business growth.

At the core of the Sage Accpac Integrated Suite are strong financial, operational, and customer relationship management features and capabilities.

❖ Core Financial

Financial Modules include powerful tools to help you confidently manage your business' complex finances:-

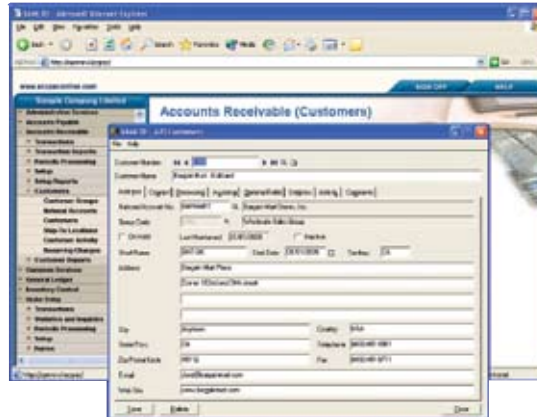
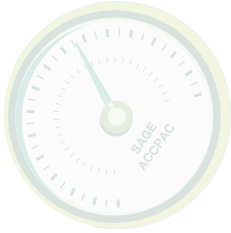
- Accounts Receivable
- Accounts Payable
- General Ledger
- System Manager

Also available are:-

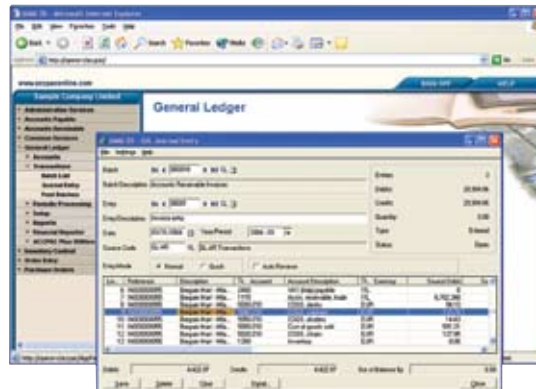
- Full multicurrency capability
- Powerful bank reconciliation
- Tax reporting features
- Flexible transaction processing options
- Dashboards for analytical reporting



Sage Accpac provides you with tools that allow you to spend less time on the small details and more time on the big picture, giving you valuable business intelligence to make your organization more competitive.



Take advantage of powerful AR features to make the most of your customer and contact information.



Sage Accpac delivers sophisticated multicurrency and global accounting features.

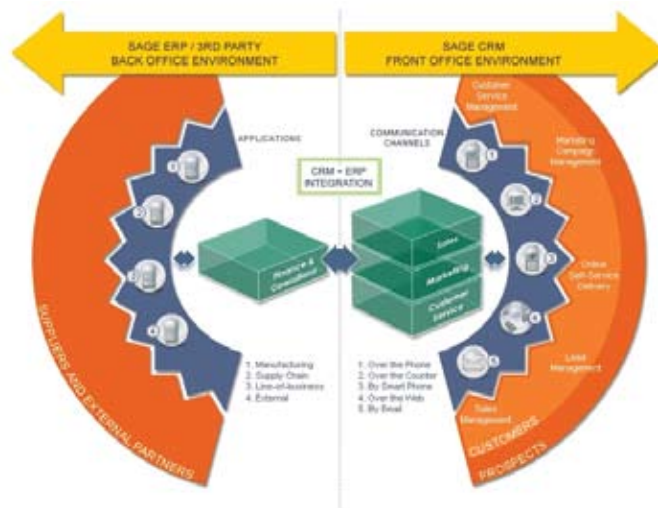
❖ Core Operational

Core Operational Modules streamlines order fulfillment process so your business can deliver every time:-

- Inventory Control
- Order Entry
- Purchase Orders
- Project Job Costing

Order Entry and Purchase Order modules are fully integrated with Project Job Costing, offering most flexibility in the way transactions can be processed.

Inventory Control module allows you to manage thousands of items and create flexible price lists and even have the option of determining how and when inventory costing is performed.



❖ Database and Operating Systems Support

Sage Accpac ERP can be deployed on either Microsoft® Windows or Linux operating systems and can run on a variety of back-end database structures, including:-

- Microsoft SQL® Server
- Pervasive.SQL
- IBM DB2
- Oracle

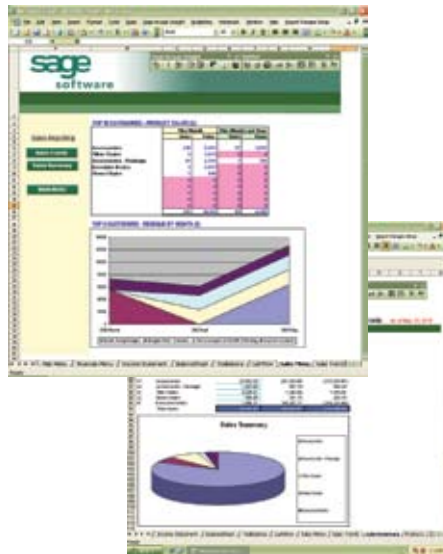
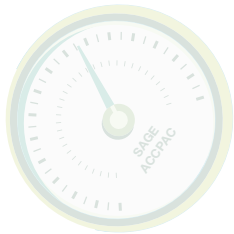
❖ Core Customer Relationship Management

Sage CRM is a powerful, easy-to-use customer relationship management solution that integrates directly with Sage Accpac ERP right out-of-the-box.

With Sage CRM, you can

- Synchronize sales, marketing and customer care activities across your business
- Gives you complete business and customer perspectives — anytime, anywhere
- Integrates with other business applications through Web services interface, enhancing your productivity even further

Integrated modules deliver comprehensive, easy-to-use tools to help you manage customers, partners and prospects regardless of how, when or where they choose to interact with your business.



With Sage Accpac Insight, powerful and flexible financial reporting is fully integrated with Microsoft Excel.

Run Your Business Your Way

Sage Accpac ERP offers out-of-the-box integration with a wide range of end-to-end business management applications. These reliable, cost-effective solutions — from Web store to warehouse management — can be implemented all at once or one at a time, depending on your particular business needs.

❖ Business Intelligence: Sage Accpac Insight

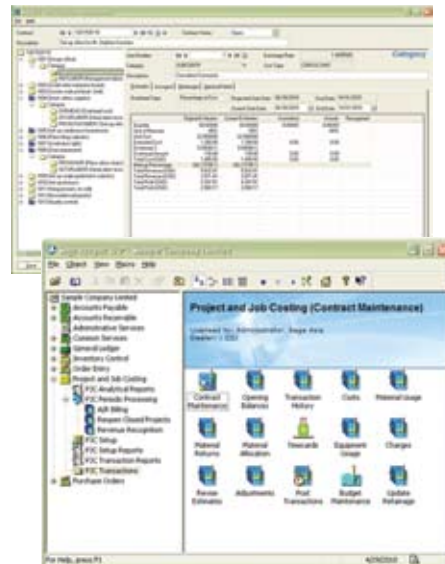
Sage Accpac Insight is an enterprise-wide reporting, budgeting, and consolidations application that is ideal for employees in remote offices and disparate departments who need to manage, distribute, and collaborate information from a single source. It allows users to quickly capture and process information into meaningful reports and to securely distribute them across the entire enterprise on demand.

❖ Sage Accpac Project Job Costing and Workflow

The Project Job Costing module provides an effective solution for project managers in construction, job service, and other professional industries who require a time-and-material system. It manages the simplest to most complex contract or job. It also makes the estimating, tracking, costing, and billing of projects easy and manageable - simplifying cost control and planning.

Sage Accpac Project Job Costing connects project activities with company financials, provides extensive inquiry and reporting capabilities and helps ensure accurate and timely accounting and billing processes throughout the life of a project.

With the powerful features you get in Project Job Costing, you can identify potential issues and determine success factors for any project. It streamlines customer invoicing and reduce the time spend managing this process.



Project Job Costing

❖ Sage Accpac Project Job Costing Capabilities

- Select the accounting method (revenue recognition method) for each project within the contract. Choose from total cost percentage complete, category cost percentage complete, labor hours percentage complete, billings and costs, project percentage complete, completed project, or accrual-basis.
- Close a project to billings and /or costs at any time.
- Drill down to the originating transactions.
- Assign staff, material, subcontractors, equipment, miscellaneous items, and overhead to each project within the contract with this powerful job cost accounting software.
- Set up complex estimates by specifying the quantity (e.g., hours), unit cost, and billing rate (for time-and-materials projects) for each staff member, material (inventory item), subcontractor, equipment, miscellaneous item, and overhead expense allocated to the project. Assign cost categories and automatically calculate cost and revenue estimates per cost category, or simply define the cost and revenue estimates for each project category.
- And many more...

Editions

Sage Accpac ERP 100

This entry level offers you strong and secure financial and operations management. It handles up to three GL account segments, stores up to seven years of history and can accommodate up to 10 concurrent users. And, Sage Accpac 100 easily manages data for up to five different companies.

Sage Accpac ERP 200

Sage Accpac ERP 200 has advanced credit claim and user-defined account group capabilities, and support for up to four GL segments. It can accommodate up to 20 concurrent users and there is no restriction on the number of companies that can be managed.

Sage Accpac ERP 500

This edition provides the mid-market customer with big business aspirations all the tools for success. Sage Accpac ERP 500 offers advanced inventory, purchasing, and order management with up to 10 GL account segments, unlimited account structures, 99 years of financial history, and the ability to manage an unlimited number of concurrent users and companies.



Sage Accpac Edition Differences

Feature	500 Version 5.5	200 Version 5.5	100 Version 5.5
Number of Companies	Unlimited	Unlimited	5
Number of Users	Unlimited users	Limited to 20 users	Limited to 10 users
Pervasive.SQL Version	Yes	Yes	Yes
Microsoft SQL Server Version	Yes	Yes	Yes
IBM DB2 Version	Yes	Yes	Yes
Oracle Version	Yes	Yes	Yes
Multicurrency	Yes	Yes	Yes
Transaction Analysis and Optional Field Creator	Yes	Yes	Yes
ACCPAC Alerts	Yes	Yes	Yes



System Manager

SageCRM for Sage Accpac Server	Supported	Supported	Supported
SageCRM for Sage Accpac Single User License	Supported	Supported	Supported
Additional Language Overlays	Supported	Supported	Supported

Financial Management

<i>NEW!</i> Integrated Dashboards	Yes	Yes	Yes
Accounts Receivable:			
Advance Credit Claims (Receipt Entry)	Yes	Yes	No
Customer Number Change	Yes	Yes	Yes
AR Inquiry	Yes	Yes	Yes
National Accounts Management	Yes	Yes	Yes
Accounts Payable:			
Advance Credit Claims (Payment Entry)	Yes	Yes	No
Vendor Number Change	Yes	Yes	Yes
General Ledger:			
<i>NEW!</i> G/L Account Rollup	Yes	No	No
<i>IMPROVED</i> Number of Account Segments	10	4	3
<i>IMPROVED</i> Number of Account Structures	Unlimited	4	3
<i>IMPROVED</i> Number of Budgets	5	3	2
<i>IMPROVED</i> Years of History	99	7	7
User-defined Accounts Groups	Yes	Yes	No
G/L Security	Yes	Yes	Yes
Account Code Change	Yes	Yes	Yes
G/L Consolidations	Yes	Yes	Yes
Intercompany Transactions	Yes	Yes	Yes

Operations Management

	500 Version 5.5	200 Version 5.5	100 Version 5.5
Inventory Control:			
Number of Item Segments	10	10	4
Multiple Levels of Bills of Material	Yes	Yes	Yes
Customer Item Numbers	Yes	No	No
Advanced Pricing			
Price by Unit of Measure	Yes	No	No
Price by Weight or Quantity	Yes	No	No
Price by a Cost Plus a Percentage or Amount	Yes	No	No
Below Cost or Sales Margin			
Price Checks	Yes	No	No
Item Number Change	Yes	Yes	Yes
Order Entry:			
Ops Inquiry	Yes	Yes	Yes
Return Merchandise Authorization	Yes	Yes	Yes
Purchase Orders:			
Vendor Contract Costs	Yes	Yes	No
Serialized Inventory	Yes	Yes	Yes
Lot Tracking	Yes	Yes	Yes
Uni-Sales Analysis	Yes	Yes	Yes



Project and Job Costing

Time Cards	Yes	Yes	Yes
------------	-----	-----	-----



“Sage Accpac has fulfilled all of our objectives in terms of financial reporting and our ever-expanding chart of accounts. With Sage Accpac business analysis tools, we are more confident than ever in our ability to make the best possible decisions for our company. With such a seamless conversion of our data and significant gains in productivity and efficiency, it is clear that Sage Accpac was the right choice for NAA.”

Steve Harfst, COO North American Airlines

ABOUT SAGE ASIA

Sage Asia, a subsidiary of The Sage Group, plc, provides small-and-medium sized businesses with a broad range of end-to-end business management applications. Its easy-to-use, scalable and customizable applications enhance its customers' competitive advantage. Its products support accounting, operations, customer relationship management, and the specialized needs of accounting practices, distribution and manufacturing. Its portfolio of leading solutions include: Sage Accpac ERP, Sage CRM, Sage Saleslogix, ACT! by Sage, UBS, EasyPay and Sage ERP X3 among others. Sage's Asia network covers Singapore, Thailand, Malaysia, China, India, UAE, Saudi Arabia and other key cities in Southeast Asia.

For more information or to find out how the Sage Accpac Integrated Suite of applications can help your business, visit us at www.sageasiapac.com or call +65 6336 6118 today.

End-to-end solutions | Expert advice | Premium Partner Support |
That's Sage 360°.



sage



Sage Software Asia Pte Ltd

210 Middle Road,
IOI Plaza #06-04
Singapore 188994

Tel : +65 6336 6118
Fax : +65 6339 6118

www.sageasiapac.com